

## SMT Off-line AOI Machine ETA-V8



### Introduction:

For SMT pre-reflow, post-reflow inline inspection

Granite platform, greatly improve machine precision and stability

Programmable RGB+W LED lighting source

Telecentric lens with constant magnification and low distortion response to high compone

### Features:

- 1.LOG automatic collecting and storage function,NG warning/alarm function, Remote programming&debugging.
- 2.Inspection ability:insufficient,short,slodering hole,solder covering pin,contamination,misalignment,missing part,skewed,billboard,mounting on side,overturn,wrong part,damaged,float,polarity,pseudo soldering,empty solder,excessive glue etc.
- 3.Perfect SPC collects NG information off line and generates all kinds of production tables automatically.
- 4.Mature control center function,clear software interface.
- 5.Good stability(GR&R<10% @6 Sigma,CPK>1.33(Test deviation accuracy less than ±0.25mm).
- 6.Camera move,conveyor fixed during test.
- 7.PCB warpage compensation:total Mark compensation calibration,component position frame compensation.

### Advantage:

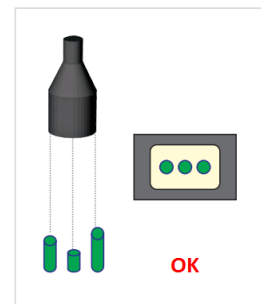
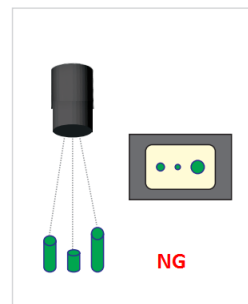
#### Granite Platform and Frame

Ensure the stability of the equipment and the consistency of sharing program between machines



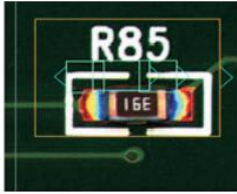
#### Industrial camera+Telecentric lens

The high component solder joint inspection is not affected as no shadow effect in the entire field of view.



**Entire FOV Assist Position**

High detection ability on no exposed pad components(BGA,etc.)or partially shielded components



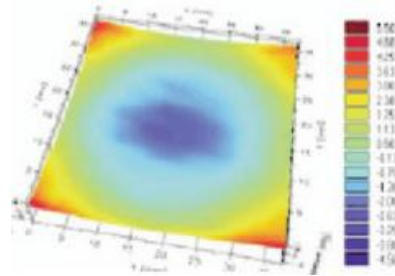
▲ Before positioning



▲ After positioning

**PCB Warpage**

Solder pad position able to reduce high false call due to deformation of PCB after reflow ,especially for FPC

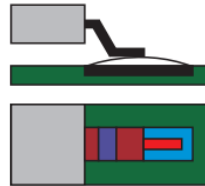


**Poor Soldering Inspection**

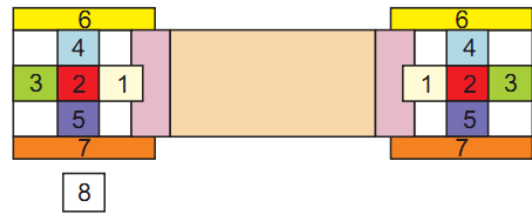
Based on precisely positioning on the solder pad,the features points of the entire solder pad will be analyzed,Therefore,the poor solder of chip or IC can be effectively detected.



Chip no wettability



IC no wettability



The shape of no wettability

- Accurately positioning pad
- Analysis 8 feature points

**Specification:**

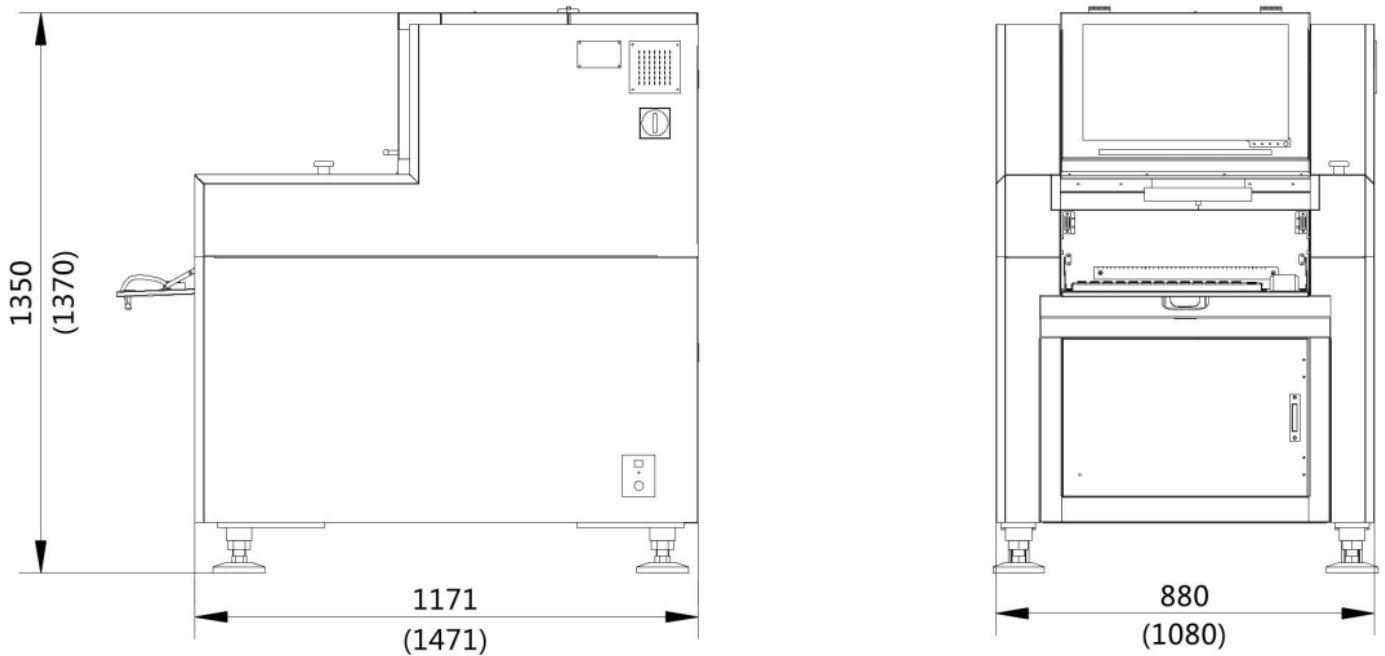
Model	ETA-V8	ETA-V8XL
FOV	15u(38.4*28.8mm)	
Camera	5M pixel intelligent digital industrial camera	
Lens	Telecentric lens	
Light	4 color ring LED light,RGB+W	
Inspection Item	Component test,soldering test	
Mini Component	03015chip,0.3pitch IC and Special shaped	
Operation System	Windows 7	
PCB Size	50*50~430*330mm	50*50~650*510mm
PCB Thickness	0.3 ~ 6.0mm	
PCB Warpage	± 3.0mm	
PCB Weight	Max:10Kg	
PCB Height	Top:25-60mm,Bottom:25-80mm adjustable	
X/Y Driver	AC servo driver,repeat accuracy 0.01mm	

Platform	Granite	
With Adjustment	Manual	
Power	AC220 50/60Hz,2.5A	
Communication	SMEMA	
Weight	500Kg	600Kg
Dimension	880*1170*1350mm(excluding the light)	1080*1470*1370mm(excluding the light)

**Customers:**



**Body Size(mm):**



**Thanks for choosing ETA.  
ETA looks forward to win-win cooperation.**