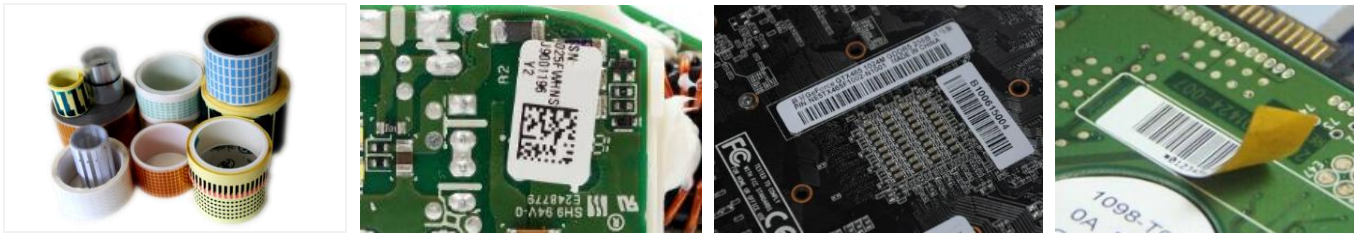


## SMT Label Mounter ETA-310



Made in Taiwan

This unit is used to mount Various barcodes label (1D, 2D, labels with different background paper colors), Various film products (translucent, opaque, different colors, different thicknesses).

**Features:**

1. R&D, design and manufacturing in Taiwan
2. In-line/Off-Line mode.
3. The X,Z,R axis adopts servo module with high precision and high speed.
4. It can realize the adsorbing and mounting of printed roll-up labels.
5. Configuring printer can realize the function of print-and-paste.
6. Configure a reader to read validation or upload barcode information.
7. The Z-axis can be adapted to label PCBA at different heights.
8. Standard 2 groups of mounting head, can adsorb 2 labels at the same time.
9. Each group of mounting heads is equipped with independent vacuum detection to prevent leakage and falling of the mark.
10. Online database system to upload and feedback barcode information.
11. 360 ° servo rotation, control mounting.
12. 600dpi latest zebra industrial grade printer.
13. 5 million industrial cameras, with three-color light source, to deal with various labels.
14. Interconnection with MES system to provide production statistics related information.

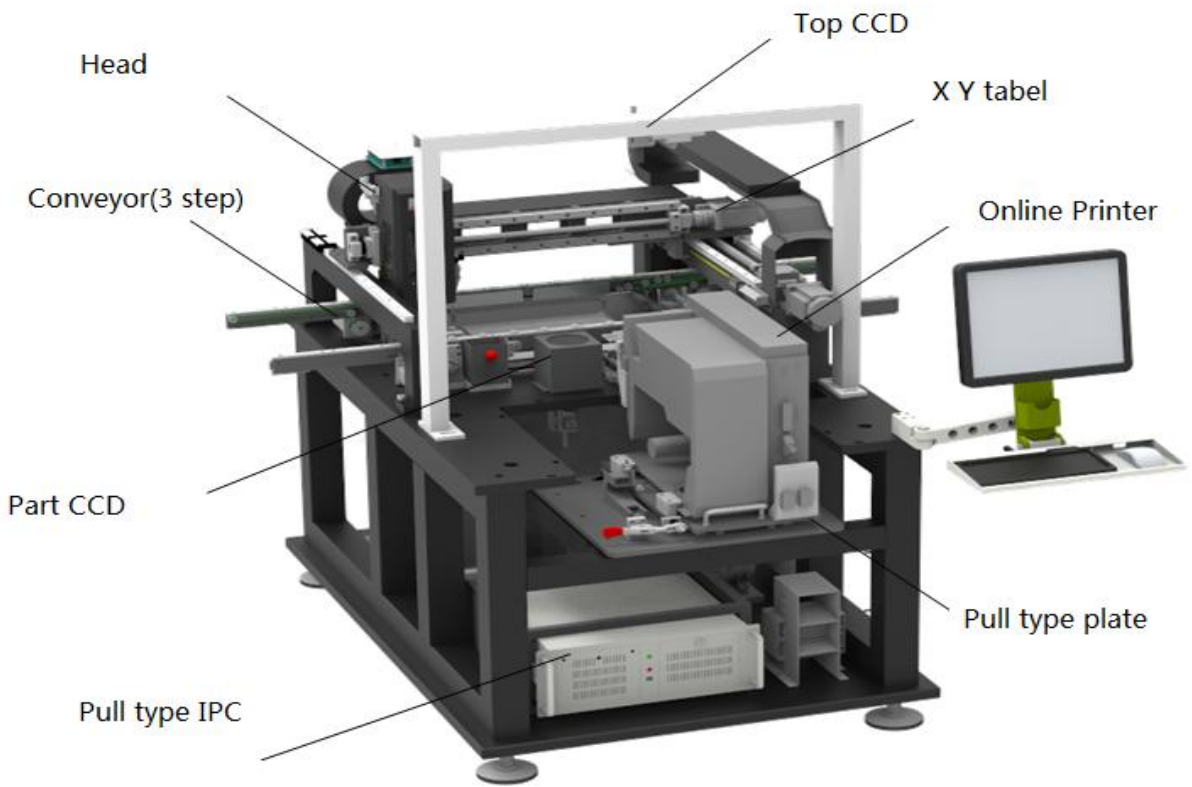
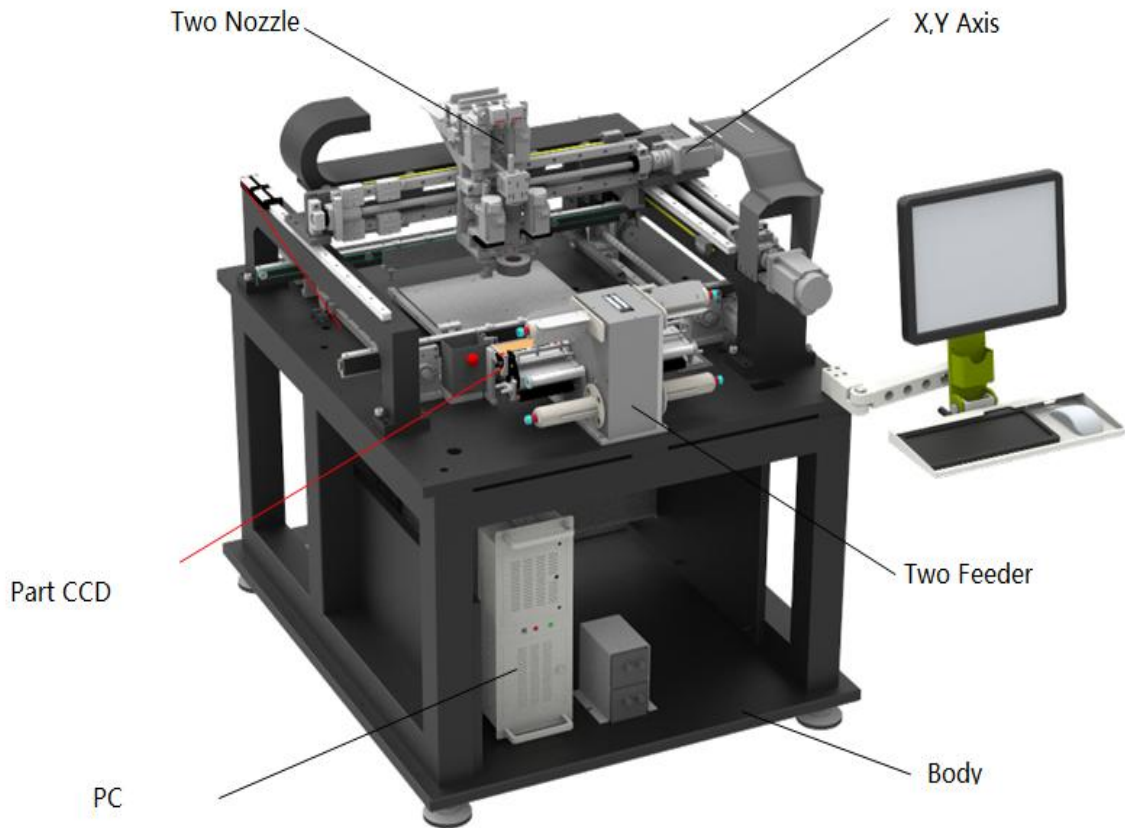


Photo:



Transport system

The unique belt conveyor can effectively prevent stuck pcb.  
The motor controls the speed is precise.PCB entry and exit directions are freely available. Automatic width adjustment.



Feeder system

Two feeder positions,maximum width of 180mm feeder,have high versatility, electronic link mode, visual recognition, effectively shorten the installation time and improve efficiency.



Mount system

The nozzle is independently controlled by double stepping motors and double slide rail to ensure accurate and stable pressure.



Operat system

Windows,Friendly MMI interface, teaching and navigation function.  
Operation log, fault record analysis and other diagnostic functions.  
New program is controlled within 5-10 minutes.



Mark system

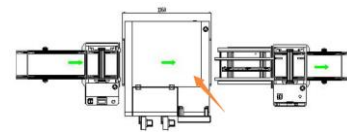
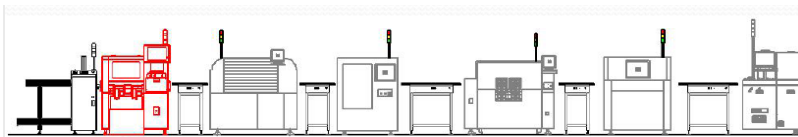
PCB Mark identification, bad mark recognition function (automatic springboard), intelligent guidance of program making, barcode reading.



Printing system

With Zebra printer, different contents can be printed online, printing and mounting can run synchronously, which can realize the flexibility of label mounting.

**Solution :**




**Materials List :**

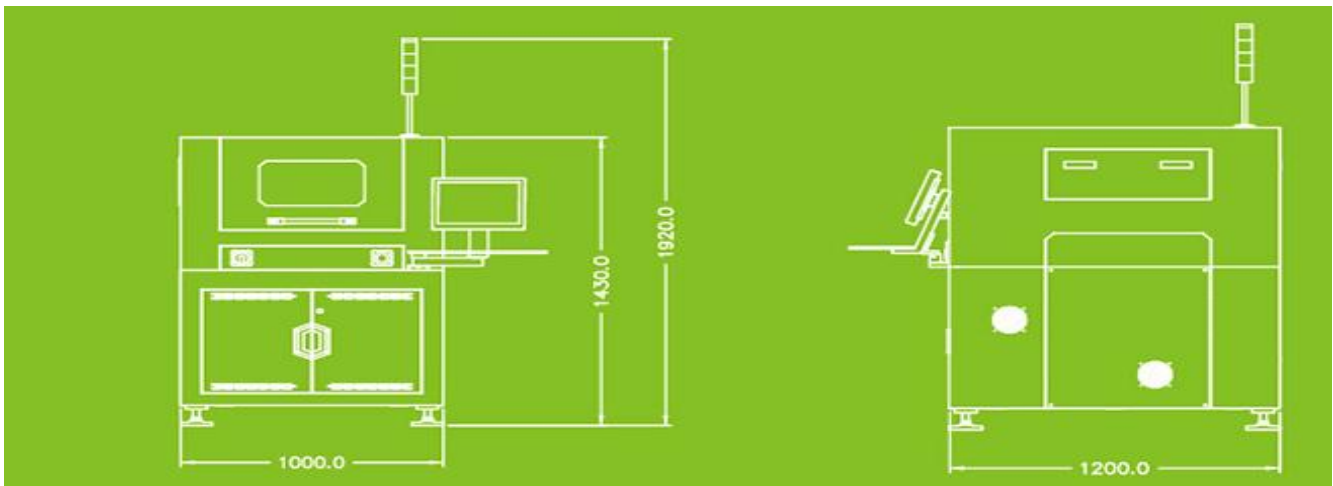
No.	Item	Brand	Original
1	Ball screw	KURODA, HIWIN	Japan, Taiwan
2	Linear Guideway	IKO, HIWIN	Japan, Taiwan
3	Sensor	OMRON, Panasonic	Japan
4	X Y Axis Servo motor	MITSUBISHI	Japan
5	Z Axis Servo motor	MITSUBISHI	Japan
6	R Axis Servo motor	MITSUBISHI	Japan
7	Cylinder	SMC	Japan
8	Vacuum generator	SMC	Japan
9	CCD Camera	BASLER	Germany
10	Software	ETA	China
11	Switch	SMC, IDEC	Japan

**Specification:**

Item	ETA-310	ETA-310P

		
Internal Printer	N/A	Zebra Brand
Speed	3500Pcs/H	
Label Size	3*3 ~ 50*50mm	
Labeling Precision	±0.05mm	
Labeling Angle	360°	
Labeling Heigh	0.6-7.0mm	
Nozzle	2	
Nozzle Vacuum Mode	Vacuum pump	
Feeder Input	2	1
PCB Size	L50*W80mm ~L450 * W350mm; Thickness 0.5mm-6mm	
Top Surface Height of PCB	<25mm	
Bottom Surface Height of PCB	<25mm	
Position System	5M CCD	
Operation Mode	X,Y,Z,R movement(Servo Motor)	
Conveyor Speed	0 ~ 1000mm/min	
Power	AC220V/50Hz, Total power: 1kva	
Air Pressure	0.5~0.6Mpa	
Body Size	L1000 *W1200 *H1500 mm	
Weight	1250Kg	

**Dimensions**



Thanks for choosing ETA.